

TM 9-4931-477-24P

SUPERSEDES TM 9-4931-477-24P DATED JULY 1983

TECHNICAL MANUAL

**ORGANIZATIONAL, DIRECT SUPPORT,
AND
GENERAL SUPPORT MAINTENANCE
REPAIR PARTS AND SPECIAL TOOLS LIST
(INCLUDING DEPOT MAINTENANCE
REPAIR PARTS AND SPECIAL TOOLS)**

FOR

**G/VLLD GROUND SUPPORT EQUIPMENT
4931-01-130-4088**

(GROUND VEHICULAR LASER LOCATOR DESIGNATOR)

**HEADQUARTERS, DEPARTMENT OF THE ARMY
AUGUST 1986**

Technical Manual
No. 9-4931-477-24P

HEADQUARTERS
DEPARTMENT OF THE ARMY
WASHINGTON, D.C., 15 August 1986

ORGANIZATIONAL, DIRECT SUPPORT, AND GENERAL SUPPORT MAINTENANCE

REPAIR PARTS AND SPECIAL TOOLS LIST

(INCLUDING DEPOT MAINTENANCE REPAIR PARTS AND SPECIAL TOOLS)

FOR

G/VLLD GROUND SUPPORT EQUIPMENT
4931-01-130-4088

(GROUND VEHICULAR LASER LOCATOR DESIGNATOR)

Current as of 16 May 1986

REPORTING OF ERRORS AND RECOMMENDING IMPROVEMENTS

You can help improve this manual. If you find any mistakes or if you know of a way to improve the procedures, please let us know. Mail your letter, DA Form 2028 (Recommended Changes to Publications and Blank Forms), or DA Form 2028-2 located in back of this manual direct to: Commander, U. S. Army Missile Command, ATTN: AMSMI-LC-ME-PS, Redstone Arsenal, AL 35898-5238. A reply will be furnished to you.

TABLE OF CONTENTS

		Page	Illus/ Figure
Section	I. INTRODUCTION	1	
Section	II. REPAIR PARTS LIST	1-1	
Group			
0010	G/VLLD Ground Support Equipment, 13090516	1-1	1
0100	Fault Locator, 11507815.....	2-1	2
0200	. . Fault Locator Panel Assembly, 11507820.....	3-1	3
0300	. . . Circuit Card Assembly, 13160370	4-1	4
0400	. Gas Charging Assembly, 11507817	5-1	5
0500	. Electronic Component, 13044298.....	6-1	6
0600	. Panel Assembly, 11559501	7-1	7
9998	Bulk Material	Bulk-1	-
Section	III. SPECIAL TOOLS LIST (Not Applicable)		
Section	IV. NATIONAL STOCK NUMBER INDEX.....	I-1	
	PART NUMBER INDEX	I-3	

*This manual supersedes TM 9-4931-477-24P, 22 July 1983.

SECTION I. INTRODUCTION

1. Scope.

This Repair Parts and Special Tools List (RPSTL) lists and authorizes spares and repair parts required for performance of organizational, direct support, and general support maintenance of the G/VLLD Ground Support Equipment. It authorizes the requisition, issue, and disposition of spares, repair parts and special tools as indicated by the Source Maintenance Recoverability (SMR) codes.

2. General.

In addition to Section I, Introduction, this RPSTL is divided into the following sections:

a. Section II. Repair Parts List. A list of spares and repair parts authorized by this RPSTL for use in the performance of maintenance. The list also includes parts which must be removed for replacement of the authorized parts. Parts lists are composed of functional groups in ascending alphanumeric sequence, with the parts in each group listed in ascending figure and item number sequence. Bulk materials are listed by item name in FIG BULK at the end of the section. Items listed are shown on the associated illustration(s)/ figure(s). All exploded parts are identified with callout numbers placed in clockwise sequence. These exploded views reflect repair parts plus those parts which must be removed in the process of disassembly for replacement or repair of the authorized item.

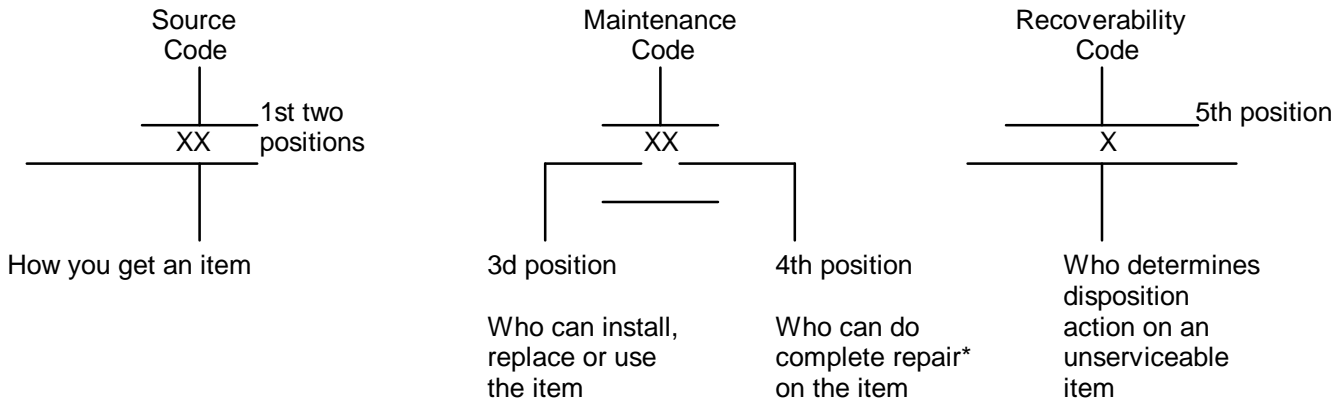
b. Section III. Special Tools List. Not applicable.

c. Section IV. National Stock Number and Part Number Index. A list, in National item identification number (NIIN) sequence, of all National stock numbered items appearing in the listing, followed by a list in alphanumeric sequence of all part numbers appearing in the listing. National stock numbers and part numbers are cross-referenced to each illustration figure and item number appearance.

3. Explanation of Columns (Section II).

a. ITEM NO. (Column (1)). Indicates the number used to identify items called out in the illustration.

b. SMR CODE (Column (2)). The Source, Maintenance, and Recoverability (SMR) code is a 5-position code containing supply/requisitioning information, maintenance category authorization criteria, and disposition instruction, as shown in the following breakout:



*Complete Repair: Maintenance capacity, capability, and authority to perform all corrective maintenance tasks of the "Repair" function in a use/user environment in order to restore serviceability to a failed item.

(1) Source Code. The source code tells you how you get an item needed for maintenance, repair, or overhaul of an end item/equipment. Explanations of source codes follow:

Code	Explanation
PA PB PC** PD PE PF PG	Stocked items; use the applicable NSN to request/requisition items with these source codes. They are authorized to the category indicated by the code entered in the 3d position of the SMR code. **NOTE: Items coded PC are subject to deterioration.
KD KF KB	Items with these codes are not to be requested/requisitioned individually. They are part of a kit which is authorized to the maintenance category indicated in the 3d position of the SMR code. The complete kit must be requisitioned and applied.
MO-(Made at Org Level) MF-(Made at DS Level) MH-(Made at GS Level) ML-(Made at Specialized Repair Act (SRA)) MD-(Made at Depot)	Items with these codes are not to be requested/requisitioned. They must be made from bulk material which is identified by part number in the DESCRIPTION AND USABLE ON column and listed in the Bulk Material group of the repair parts list in this RPSTL. If the item is authorized to you by the 3d position code of the SMR code, but the source code indicates it is made at a higher level, order the item from the higher level of maintenance.

AO-(Assembled by Org Level)
AF-(Assembled by DS Level)
AH-(Assembled by GS Level)
AL-(Assembled by SRA)
AD-(Assembled by Depot)

Items with these codes are not to be requested/requisitioned individually. The parts that make up the assembled item must be requisitioned or fabricated and assembled at the level of maintenance indicated by the source code. If the 3d position code of the SMR code authorizes you to replace the item, but the source code indicates the item is assembled at a higher level, order the item from the higher level of maintenance.

- XA - Do not requisition an "XA"-coded item. Order its next higher assembly. (Also, refer to the NOTE below.)
- XB - If an "XB" item is not available from salvage, order it using the FSCM and part number given.
- XC - Installation drawing, diagram, instruction sheet, field service drawing, that is identified by manufacturer's part number.
- XD - Item is not stocked. Order an "XD"-coded item through normal supply channels using the FSCM and part number given, if no NSN is available.

NOTE: Cannibalization or controlled exchange, when authorized, may be used as a source of supply for items with the above source codes, except for those source coded "XA" or those aircraft support items restricted by requirements of AR 700-42.

(2) Maintenance Code. Maintenance codes tell you the level(s) of maintenance authorized to USE and REPAIR support items. The maintenance codes are entered in the third and fourth positions of the SMR code as follows:

(a) The maintenance code entered in the 3d position tells you the lowest maintenance level authorized to remove, replace, and use an item. The maintenance code entered in the 3d position will indicate authorization to one of the following levels of maintenance.

Code	Application/Explanation
C	- Crew or operator maintenance done within organizational or aviation unit maintenance.
O	- Organizational or aviation unit level can remove, replace and use the item.
F	- Direct support or aviation intermediate level can remove, replace, and use the item.
H	- General support level can remove, replace, and use the item.
L	- Specialized repair activity can remove, replace, and use the item.
D	- Depot level can remove, replace, and use the item.

(b) The maintenance code entered in the fourth position tells whether or not the item is to be repaired and identifies the lowest maintenance level with the capability to do complete repair (i.e., perform all authorized repair functions). (NOTE: Some limited repair may be done on the item at a lower level of maintenance, if authorized by the Maintenance Allocation Chart (MAC) and SMR codes.) This position will contain one of the following maintenance codes.

Code	Application/Explanation
O	- Organizational or aviation unit is the lowest level that can do complete repair of the item.
F	- Direct support or aviation intermediate is the lowest level that can do complete repair of the item.
H	- General support is the lowest level that can do complete repair of the item.
L	- Specialized repair activity (designate the specialized repair activity) is the lowest level that can do complete repair of the item.
D	- Depot is the lowest level that can do complete repair of the item.
Z	- Nonreparable. No repair is authorized.
B	- No repair is authorized. (No parts or special tools are authorized for the maintenance of a "B" coded item). However, the item may be reconditioned by adjusting, lubricating, etc., at the user level.

(3) Recoverability Code. Recoverability codes are assigned to items to indicate the disposition action on unserviceable items. The recoverability code is entered in the fifth position of the SMR code as follows:

Recoverability Codes	Application/Explanation
Z	- Nonreparable item. When unserviceable, condemn and dispose of the item at the level of maintenance shown in 3d position of SMR code.
O	- Repairable item. When uneconomically repairable, condemn and dispose of the item at organizational or aviation unit level.
F	- Repairable item. When uneconomically repairable, condemn and dispose of the item at the direct support or aviation inter-mediate level.
H	- Repairable item. When uneconomically repairable, condemn and dispose of the item at the general support level.

Recoverability Codes	Application/Explanation
D	- Reparable item. When beyond lower level repair capability, return to depot. Condemnation and disposal of item not authorized below depot level.
L	- Reparable item. Condemnation, and disposal not authorized below specialized repair activity (SRA).
A	- Item requires special handling or condemnation procedures because of specific reasons (e.g., precious metal content, high dollar value, critical material, or hazardous material). Refer to appropriate manuals/directives for specific instructions.

NOTE: See SPECIAL INFORMATION, paragraph 5(a), for additional explanation of Recoverability Code A.

c. FSCM (Column (3)). The Federal Supply Code for Manufacturer (FSCM) is a 5-digit numeric code which is used to identify the manufacturer, distributor, or Government agency, etc., that supplies the item.

d. PART NUMBER (Column (4)). Indicates the primary number used by the manufacturer (individual, company, firm, corporation, or Government activity), which controls the design and characteristics of the item by means of its engineering drawings, specifications standards, and inspection requirements to identify an item or range of items.

NOTE: When you use a NSN to requisition an item, the item you receive may have a different part number from the part ordered.

e. DESCRIPTION AND USABLE ON CODE (UOC) (Column (5)). This column includes the following information:

(1) The Federal item name and, when required, a minimum description to identify the item.

(2) Part numbers for bulk materials are referenced in this column in the line item entry for the item to be manufactured/fabricated.

(3) The statement "END OF FIGURE" appears just below the last item description in Column 5 for a given figure in Section II.

f. QTY (Column (6)). The QTY (quantity per figure column) indicates the quantity of the item used in the breakout shown on the illustration figure, which is prepared for a functional group, subfunctional group, or an assembly. A "V" appearing in this column in lieu of a quantity indicates that the quantity is variable and the quantity may vary from application to application.

4. Explanation of Columns (Sect. IV).

a. NATIONAL STOCK NUMBER (NSN) INDEX.

(1) STOCK NUMBER column. This column lists the NSN by National item identification number (NIIN) sequence. The NIIN consists of the last nine digits NSN of the NSN (i.e., 5305-01-574-1467). When using this column to locate an item, NIIN ignore the first 4 digits of the NSN. However, the complete NSN should be used when ordering items by stock number.

(2) FIG. column. This column lists the number of the figure where the item is identified/located. The figures are in numerical order in Section II.

(3) ITEM column. The item number identifies the item associated with the figure listed in the adjacent FIG. column. This item is also identified by the NSN listed on the same line.

b. PART NUMBER INDEX. Part numbers in this index are listed by part number in ascending alphanumeric sequence (i.e., vertical arrangement of letter and number combination which places the first letter or digit of each group in order A through Z, followed by the numbers 0 through 9 and each following letter or digit in like order).

(1) FSCM column. The Federal Supply Code for Manufacturer (FSCM) is a 5-digit numeric code used to identify the manufacturer, distributor, or Government agency, etc., that supplies the item.

(2) PART NUMBER column. Indicates the primary number used by the manufacturer (individual, firm, corporation, or Government activity) which controls the design and characteristics of the item by means of its engineering drawings, specifications standards, and inspection requirements to identify an item or range of items.

(3) STOCK NUMBER column. This column lists the NSN for the associated part number and manufacturer identified in the PART NUMBER and FSCM columns to the left.

(4) FIG. column. This column lists the number of the figure where the item is identified/located in Section II.

(5) ITEM column. The item number is that number assigned to the item as it appears in the figure referenced in the adjacent figure number column.

5. Special Information.

a. Items assigned recoverability code "A" require research to determine the appropriate special handling or condemnation procedures. The "A" recover- ability code is utilized to identify items containing precious metal and/or hazardous material and items requiring special disposal instructions, such as, centralized recovery, due to unique management interests. If the item with a recoverability code of "A" cannot be identified as being an item under one of the above conditions, the item may require special cannibalization actions prior to disposal of the item. The "A" code is also utilized to denote selected repairable items which require lower generation spares/repair parts to be removed prior to the disposal of the repairable item. When these "A" coded items are

determined to be uneconomically repairable at the authorized 4th position level, the recoverability code of all lower generation items must be reviewed. Any lower generation items which have a higher recoverability code level than the SMR 4th position level of the uneconomically repairable item must be removed and forwarded to the appropriate level authorized for individual disposition prior to disposal of the uneconomically repairable item. The uneconomically repairable item is then authorized to be disposed of, with the higher level recoverability item missing, at the level denoted by the SMR 4th position.

b. USABLE ON CODE. The usable on code appears in the lower left corner of the Description column heading. Usable on codes are shown as "UOC:....." in the Description column (justified left) on the first line applicable item description/nomenclature. Uncoded items are applicable to all models. Identification of the usable on codes used in the RPSTL are:

<u>Code</u>	<u>Used On</u>
EGK	G/VLLD Ground Support Equipment

c. FABRICATION INSTRUCTIONS. Bulk materials required to manufacture items are listed in the Bulk Material Functional Group of this RPSTL. Part numbers for bulk materials are also referenced in the Description column of the line item entry for the item to be manufactured/fabricated. Detailed fabrication instructions for items source coded to be manufactured or fabricated are found in TM 9-1260-477-12.

d. INDEX NUMBERS. Items which have the word BULK in the figure column will have an index number shown in the item number column. This index number is a cross-reference between the National Stock Number/Part Number Index and the bulk material list in Section II.

e. For requisitioning miscellaneous consumable maintenance supplies or expendable supplies, use CTA 50-970.

f. National stock number(s) (NSNs) that are missing for "P" source coded items have been applied for and will be added to this manual by a change/ revision when they are entered in the Army Master Data File (AMDF). Until the NSNs are established and published, submit exception requisitions to: Commander, U.S. Army Missile Command, ATTN: AMSMI-LC-MM-DCT, Redstone Arsenal, AL 35898-5239.

g. The following publication(s) pertain to GLLD/FISTV System and its components:

<u>Publication</u>	<u>Short Title</u>
TM 9-1260-477-12	Operator and Organizational Maintenance
TM 9-1260-477-34	DS & GS Maintenance for Ground GLLD
TM 9-1260-477-34-2	DS & GS Maintenance for-FISTV G/VLLD

6. How to Locate Repair Parts.a. When National Stock Number or Part Number is Not Known.

(1) First. Using the Table of Contents, determine the assembly group or subassembly group to which the item belongs. This is necessary since figures are prepared for assembly groups and subassembly groups, and listings are divided into the same groups.

(2) Second. Find the figure covering the assembly group or subassembly group to which the item belongs.

(3) Third. Identify the item on the figure and note the item number.

(4) Fourth. Refer to the Repair Parts List for the figure to find the part number for the item number noted on the figure.

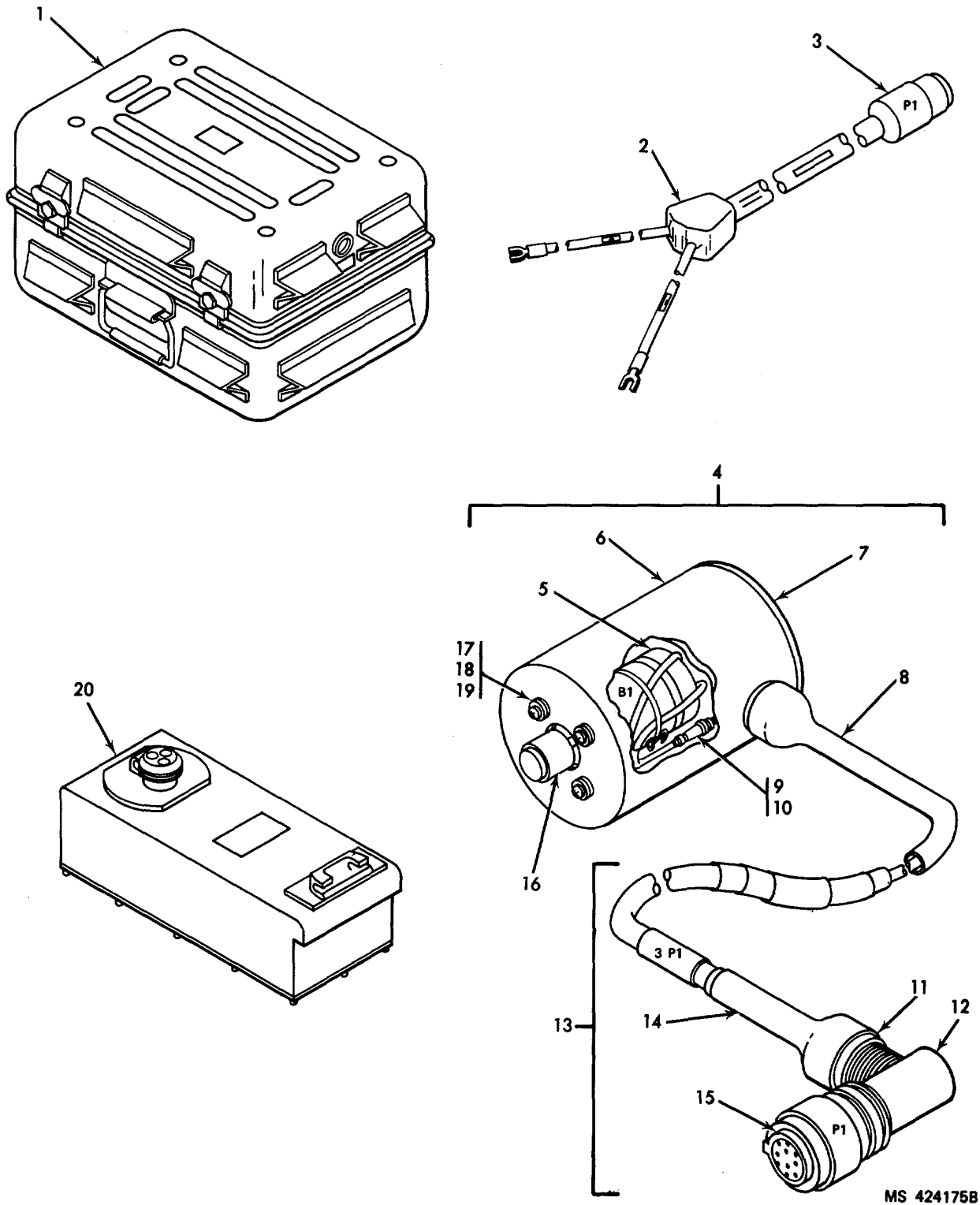
(5) Fifth. Refer to the Part Number Index to find the NSN, if assigned.

b. When National Stock Number or Part Number is Known:

(1) First. Using the Index of National Stock Numbers and Part Numbers, find the pertinent National stock number or part number. The NSN index is in NIIN sequence (see 4.a(1)). The part numbers in the Part Number index are listed in ascending alphanumeric sequence (see 4.b). Both indexes cross-reference you to the illustration figure and item number of the item you are looking for.

(2) Second. After finding the figure and item number, verify that the item is the one you're looking for, then locate the item number in the repair parts list for the figure.

7. Abbreviations. Not applicable.



MS 4241758

Figure 1. G/VLLD Ground Support Equipment (13090516)
(Group 0010) (Sheet 1 of 3)

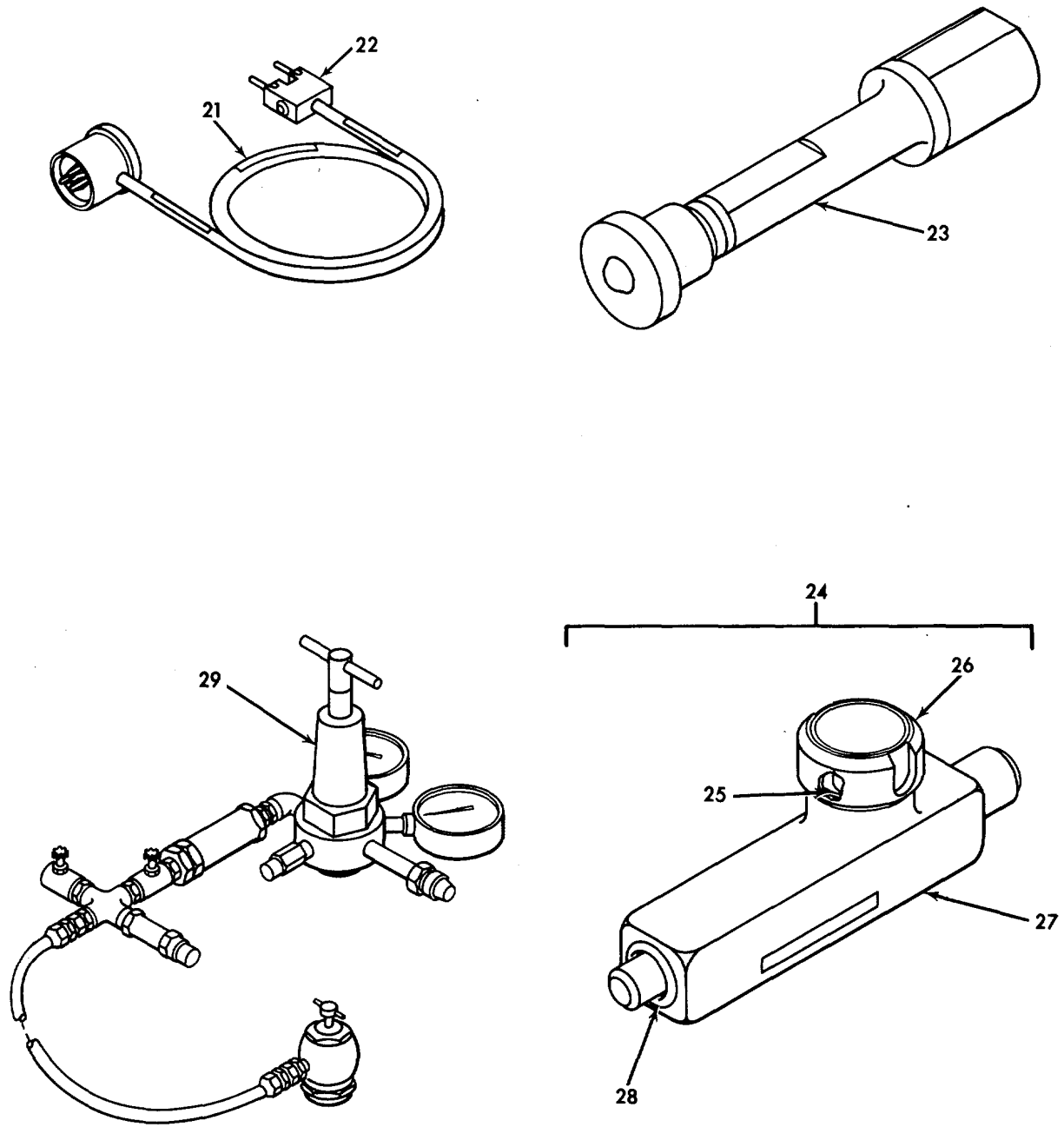


Figure 1. G/VLLD Ground Support Equipment (13090516)
(Group 0010) (Sheet 2 Of 3)

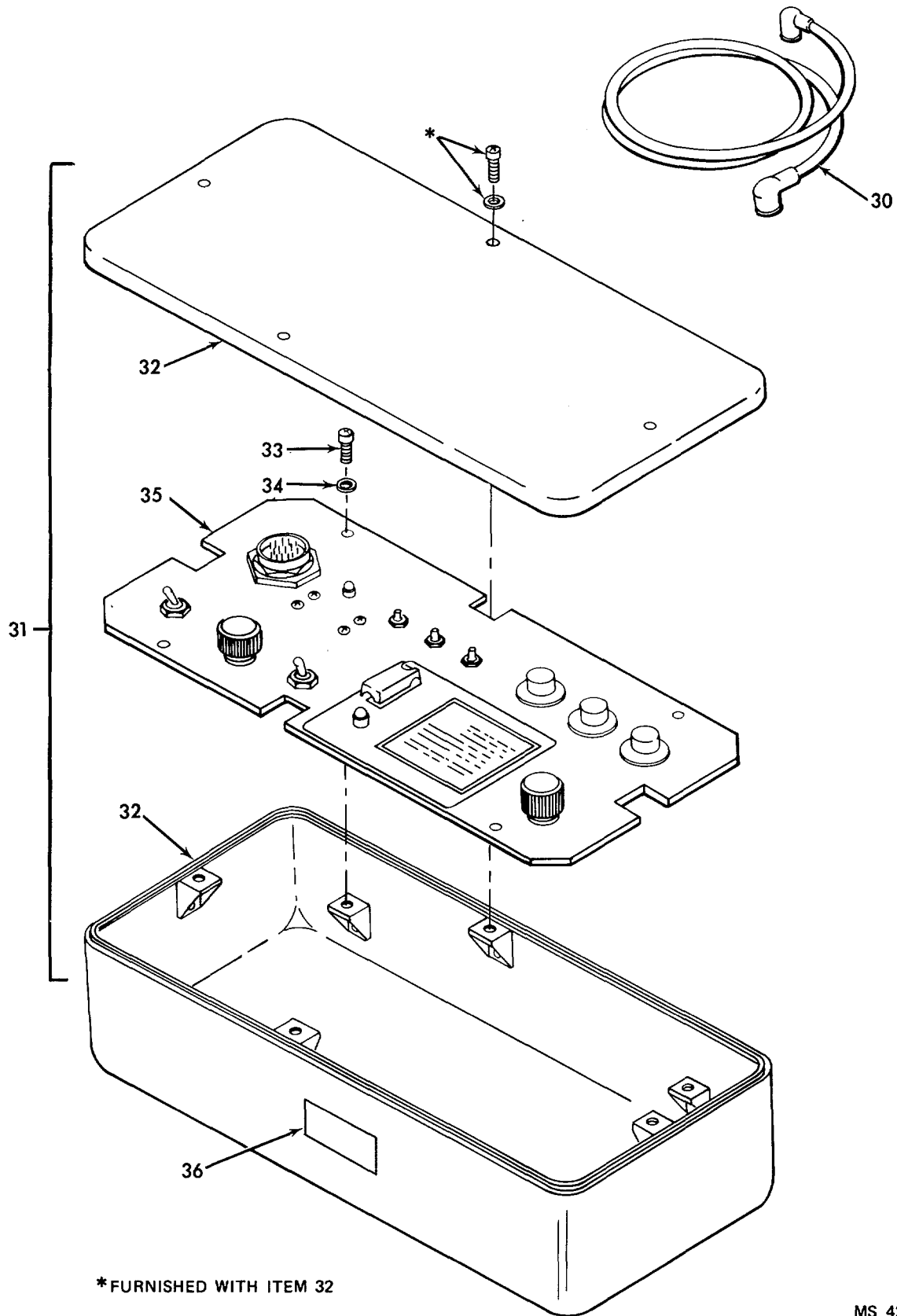
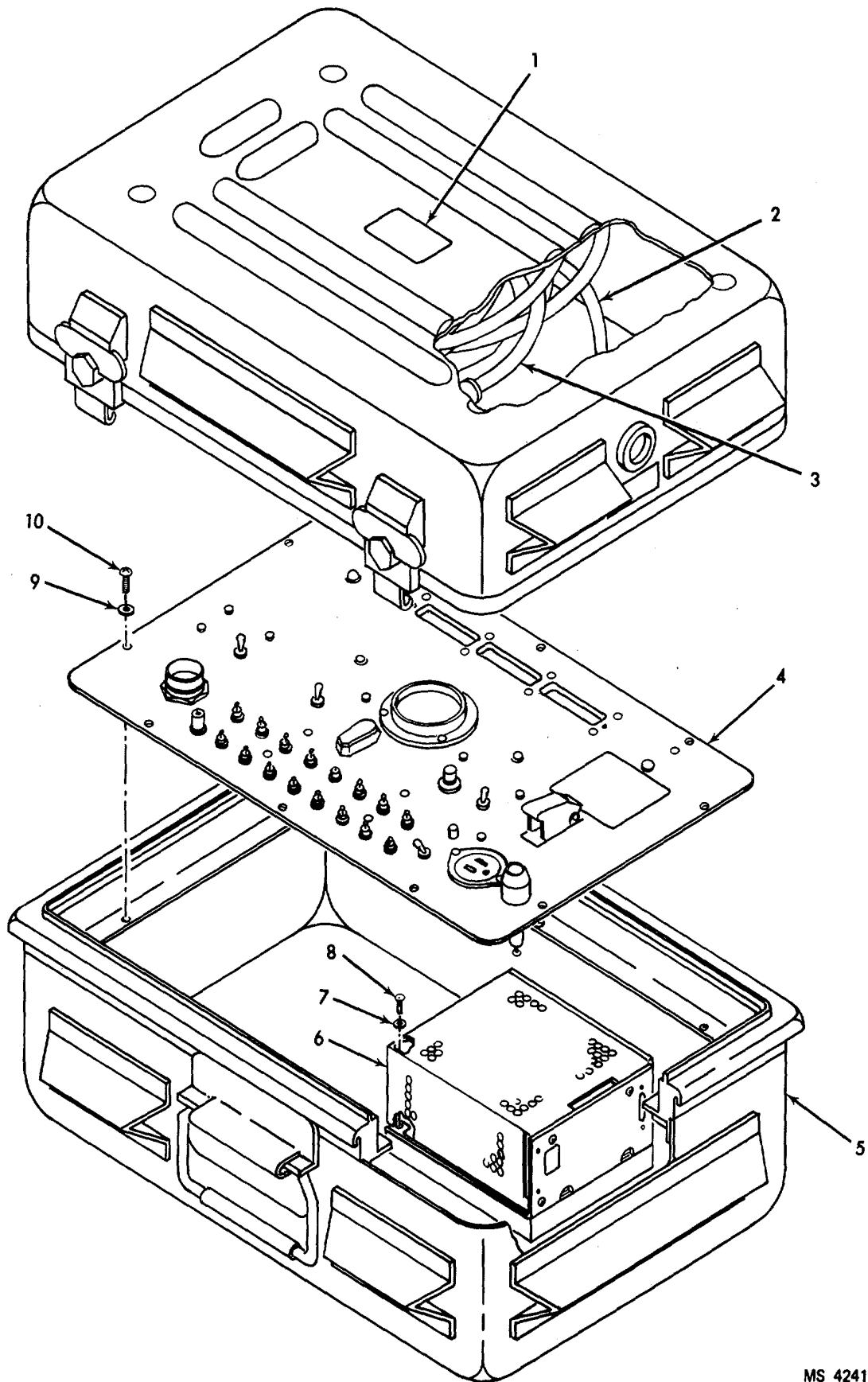


Figure 1. G/VLLD Ground Support Equipment (13090516)
(Group 0010) (Sheet 3 of 3)

SECTION II

(1) ITEM NO	(2) SMR CODE	(3) FSCM	(4) PART NUMBER	(5) DESCRIPTION AND USABLE ON CODES (UOC)	(6) QTY
GROUP 0010 FIG. NO. 1 G/VLLD GROUND SUPPORT EQUIPMENT 13090516 (18876)					
1	PBFFF	18876	11507815	FAULT LOCATOR (FOR PARTS SEE FG 0100)	1
2	PAFFF	18876	13033955	CABLE ASSEMBLY,POWE	1
3	XAFZZ	96906	MS3476L14-4S	CONNECTOR, PLUG,ELEC	1
4	PAFDD	18876	11508483	RESOLVER ASSEMBLY.....	1
5	PADZZ	18876	MIS-23529	RESOLVER,ELECTRICAL.....	1
6	XODZZ	55717	11508018	HOUSING ASSEMBLY	1
7	XODZZ	55717	11508043	PLUG.....	1
8	PADZZ	81349	M83723/16S08B	AGAPTER,CABLE CLAMP.....	1
9	PADZZ	81349	M83519/1-2	SPLICE,CONDUCTOR.....	4
10	PADZZ	81349	M83519/1-1	SPLICE,CONDUCTOR	1
11	PADZZ	81349	M83723/16M12M	ADAPTER,CABLE CLAMP	1
12	XDDZZ	55717	11559723	ADAPTER,CONNECTOR	1
13	PADDD	18876	11507925	CABLE ASSEMBLY,SPEC.....	1
14	XDDZZ	55717	11559721	BOOT,STRAIN RLF.....	1
15	PADZZ	96906	MS3475L12-10S	CONNECTOR,PLUG,ELEC	1
16	PADZZ	96906	MS91528-OE1B	KNOB	1
17	PADZZ	96906	MS51957-13	SCREW,MACHINE	4
18	PADZZ	88044	AN960C4L	WASHER,FLAT	4
19	PADZZ	96906	MS35338-135	WASHER,LOCK	4
20	PAODD	18876	13044298	ELECTRONIC COMPONEN (FOR PARTS SEE FG 0500).....	1
21	PAOZZ	18876	13034390	CABLE ASSEMBLY,POWE.	5
22	PAFZZ	18876	13160219	CONNECTOR.....	1
23	PAFZZ	18876	11507849	EXTENSION,FILL VALV	1
24	PBFFF	18876	11507835	ADAPTER ASSEMBLY	1
25	PAFZZ	18876	11507646-31	PACKING,PREFORMED	1
26	PAFZZ	18876	13033896	VALVE	1
27	PAFZZ	18876	11507833	ADAPTER,PURGE VALVE	1
28	PAFZZ	96906	MS9068-010	PACKING,PREFORMED	1
29	PDFFF	18876	11507817	MANIFOLD,CHARGING,G (FOR PARTS SEE FG 0400).....	1
30	PAFZZ	18876	11559506	CABLE ASSEMBLY,SPEC.....	1
31	XDFDD	18876	11559500	REMOTE TESTER.....	1
32	XDFZZ	18876	11559504	CASE,TESTER	1
33	PAFZZ	80205	NAS1635-06-7	SCREW,MACHINE	4
34	PAFZZ	80205	NAS620C6L	WASHER,FLAT	4
35	XDFFF	18876	11559501	PANEL ASSEMBLY (FOR PARTS SEE FG 0600).....	1
36	XDDZZ	18876	8034915	PLATE,IDENTIFICATIO.....	1

END OF FIGURE



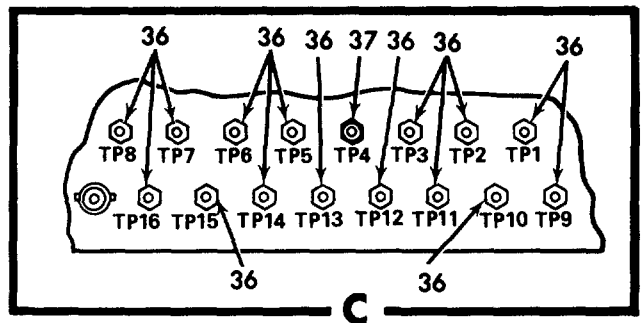
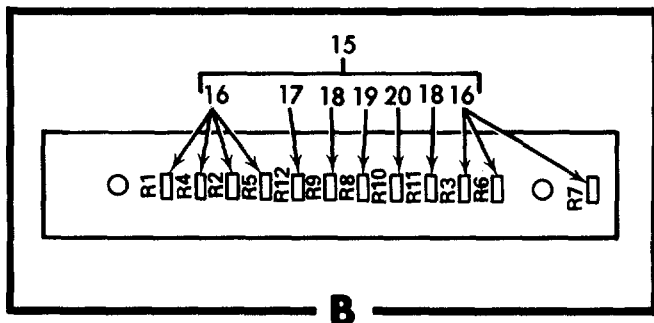
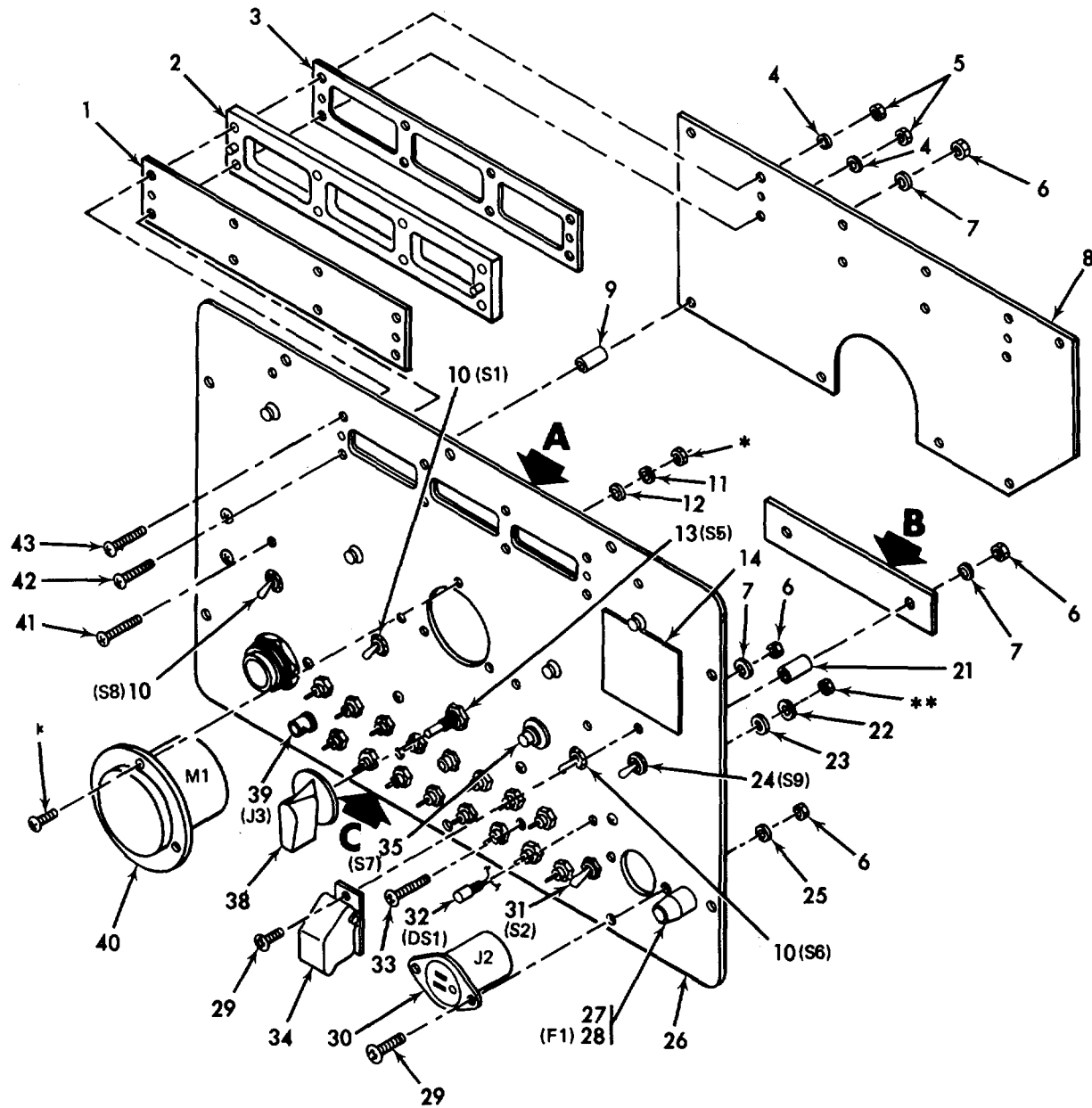
MS 424177A

Figure 2. Fault Locator (11507815) (Group 0100)

SECTION II

(1) ITEM NO	(2) SMR CODE	(3) FSCM	(4) PART NUMBER	(5) DESCRIPTION AND USABLE ON CODES (UOC)	(6) QTY
				GROUP 0100 FAULT LOCATOR 11507815 (18876)	2
1	XDDZZ	55717	8034915	PLATE,IDENTIFICATIO.....	1
2	PAFZZ	18876	11508261	CABLE ASSEMBLY,SPEC.....	1
3	PAFZZ	18876	11507839	CABLE ASSEMBLY,POWE.....	1
4	XDFFF	55717	11507820	PANEL,FAULT LOCATOR (FOR PARTS SEE..... FG 0200).....	1
5	PBFZZ	18876	11507842	CASE,DESIGNATOR.....	1
6	PAFZZ	18876	11559722	POWER SUPPLY	1
7	PAFZZ	80205	NAS620C6	ASHER	4
8	PAFZZ	96906	MS51957-28	SCREW,MACHINE	4
9	PAFZZ	96906	MS15795-808	WASHER,FLAT	10
10	PAFZZ	96906	MS51958-65	SCREW,MACHINE.....	10

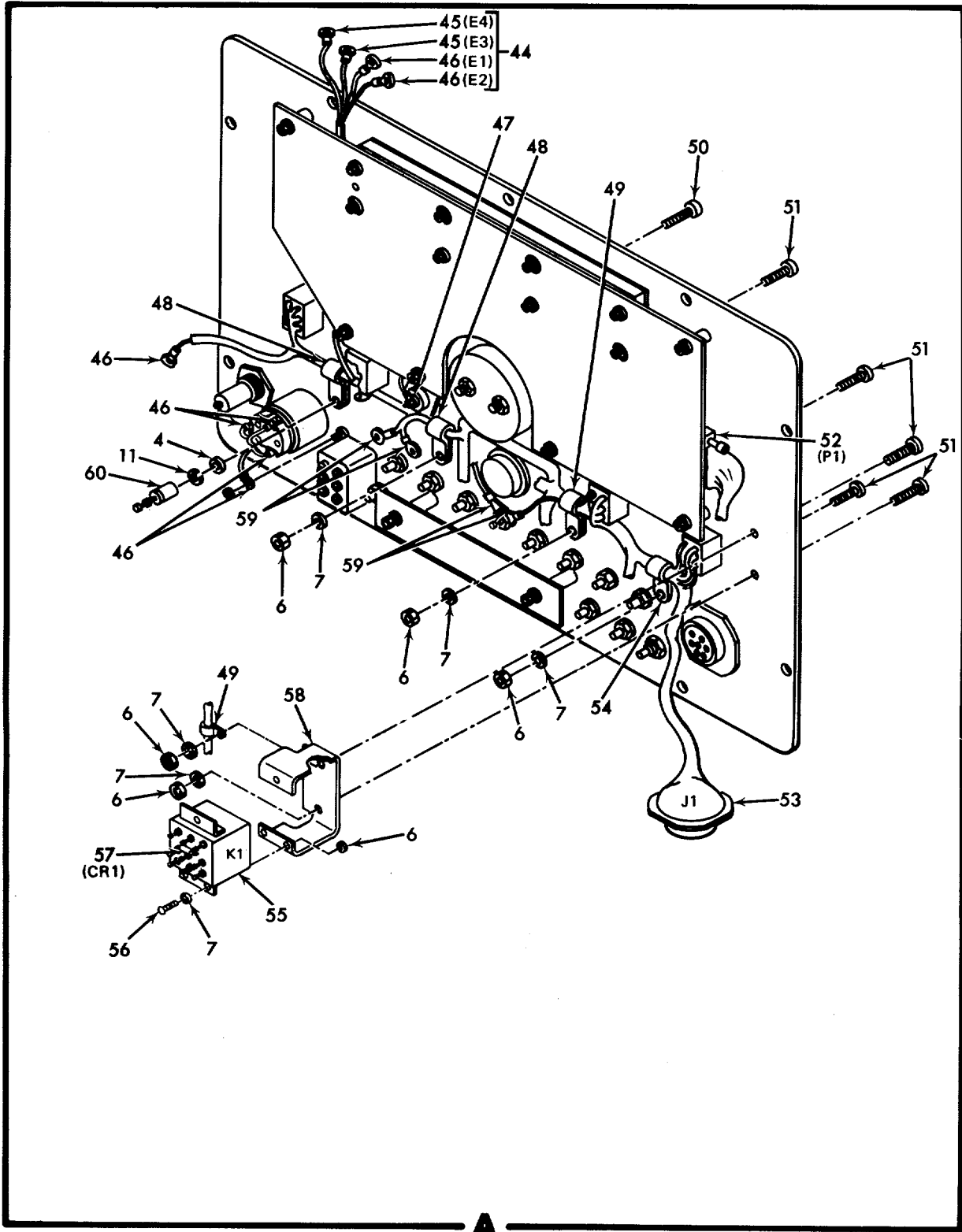
END OF FIGURE



**FURNISHED WITH ITEM 32
 *FURNISHED WITH ITEM 40

MS 424179

Figure 3. Fault Locator Panel Assembly (11507820) (Group 0200)
 (Sheet 1 of 2)



A

MS 424180

Figure 3. Fault Locator Panel Assembly (11507820) (Group 0200)
(Sheet 2 of 2)

SECTION II

(1) ITEM NO	(2) SMR CODE	(3) FSCM	(4) PART NUMBER	(5) DESCRIPTION AND USABLE ON CODES (UOC)	(6) QTY
				GROUP 0200 FIG. NO. 3	
				FAULT LOCATOR PANEL ASSEMBLY	
				11507820 (18876)	
1	PAFZZ	18876	11507834	WINDOW, FILTER.....	1
2	XDFZZ	55717	11507837	PLATEESUPPORT	1
3	PAFZZ	18876	11507843	INSULATOR, DISPLAY.....	V
4	PAFZZ	96906	MS15795-804	WASHER, FLAT	5
5	PAFZZ	80205	NAS1291C04M	NUT, SELF-LCCKING, EX	8
6	PAFZZ	80205	NAS1291C06H	NUT, SELF-LOCKING, EX.....	19
7	PAFZZ	96906	MS15795-806	WASHER, FLAT	17
8	PAFDD	18876	13160370	CIRCUIT CARD ASSEMB (FCR PARTS SEE.....	1
				FG 0300).....	
9	XDFZZ	80205	NAS43DD-1-27	SPACER, SLEEVE	6
10	PAFZZ	81349	M8805-26-001	SWITCH, TOGGLE.....	3
11	PAFZZ	96906	MS35338-135	WASHER, LOCK	4
12	PAFZZ	80205	NAS620C4	WASHER, FLAT	7
13	PAFZZ	81349	M3786-4-3050	SWITCH, PROTARY	1
14	XDFZZ	55717	13044113	PLATE, LASER WRNG.....	1
15	XDFFF	55717	11507846	RESISTOR ASSEMBLY.....	1
16	PAFZZ	81349	RCR07G102JS	RESISTOR, FIXED, COMP.....	7
17	PAFZZ	81349	RNC55H3012FS	RESISTOR, FIXED, FILM.....	1
18	PAFZZ	81349	RNC55H1872FS	RESISTOR, FIXED, FILM	2
19	PAFZZ	81349	RCR07G101JS	RESISTOR, FIXED, COMP.....	1
20	PAFZZ	81349	RNC55H6191FS	RESISTOR, FIXED, FILM	1
21	PAFZZ	80205	NAS43DD1-64	SPACER, SLEEVE	2
22	PAFZZ	96906	MS35338-138	WASHER, LOCK	1
23	PAFZZ	96906	MS15795-808	WASHER, FLAT	1
24	PAFZZ	81349	M8805/26-009	SWITCH, TOGGLE.....	1
25	PAFZZ	80205	NAS620C6	WASHER, FLAT	2
26	XAFZZ	55717	11507822	PANEL, FAULT LOCATOR.....	1
27	PAFZZ	81349	FHN26G1	FUSEHOLDER, EXTRACTO.....	1
28	PAFZZ	81349	F02B250V1A	FUSE, CARTRIDGE	1
29	PAFZZ	96906	MS51957-30	SCREW, MACHINE	3
30	PAFZZ	55717	11507852	CONNECTOR, RECEPTACL.....	1
31	PAFZZ	96906	MS24524-23	SWITCH, TOGGLE.....	1
32	PAFZZ	81349	LHC83/1GT2	LIGHT, INDICATOR.....	1
33	PAFZZ	96906	MS51951-36	SCREW, MACHINE	2
34	XOFZZ	55717	11507847	GUARD, SWITCH.....	1
35	PAFZZ	96906	MS25089-4C	SWITCH, PUSH.....	1
36	PAFZZ	81349	FT019A01	TERMINAL, FEEDTHRU.....	15
37	PAFZZ	81349	M39024/10-02	JACK, TIP	1
38	PAFZZ	96906	MS91528-1828	KNOB.	
39	PAFZZ	81349	M39012/21-0001	CONNECTOR, RECEPTACL.....	1
40	PAFZZ	18876	11507829	METER, FAULT LOCATOR	1
41	PAFZZ	96906	MS51957-33	SCREW, MACHINE	6
42	PAFZZ	96906	MS51957-19	SCREW, MACHINE	4
43	PAFZZ	96906	MS51957-20	SCREW, MACHINE	4
44	XDFFF	55717	11507845	HIRING HARNESS	1
45	PAFZZ	96906	MS25036-145	TERMINAL, LUG.....	2
46	PAFZZ	96906	MS25036-101	TERMINAL, LUG.....	4

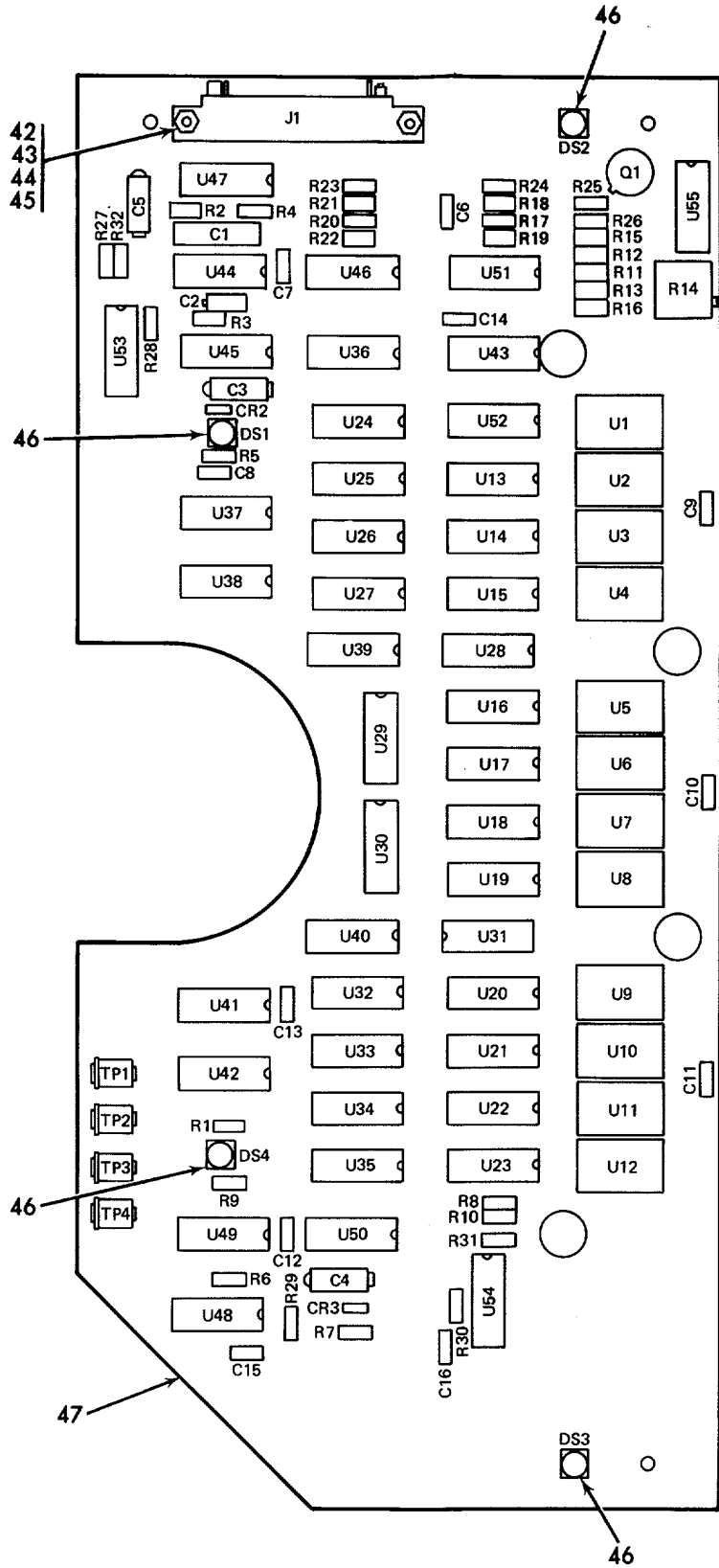
SECTION II

TM 9-4931-477-24P

(1) ITEM NO	(2) SMR CODE	(3) FSCM	(4) PART NUMBER	(5) DESCRIPTION AND USABLE ON CODES (UOC)	(6) QTY
47	PAFZZ	96906	MS25036-143	TERMINAL,LUG.....	1
48	PAFZZ	96906	MS25281F4	CLAMP,LOOP.....	2
49	PAFZZ	96906	MS25281F5	CLAMP,LOOP.....	2
50	PAFZZ	96906	MS51957-17	SCREW,MACHINE.....	1
51	PAFZZ	96906	MS51957-31	SCREW,MACHICINE.....	4
52	PAFZZ	81349	M55302/62A26M	CONNECTOR,PLUG,ELEC.....	1
53	PADZZ	81349	M83723/06R1832N	CONNECTOR.....	1
54	PAFZZ	96906	MS25281F6	CLAMP,LOOP.....	1
55	PAFZZ	96906	MS27743-4	RELAY ,ELECTROMAGNENT.....	1
56	PAFZZ	96906	MS51957-28	SCREW,MACHINE.....	3
57	PAFZZ	81349	JANTX1N5614	SEMICONDUCTOR DEVIC.....	1
58	XDFZZ	18876	11559684	BRACKET,RELAY.....	1
59	PAFZZ	96906	MS25036-150	TERMINAL,LUG.....	4
60	PAFZZ	98278	6128	TERMINAL,STUD.....	

END OF FIGURE

3-2(3-3 Blank)



REF DES	ITEM NO.
C1	1
C2	2
C3	THRU
C5	3
C6	THRU
C13	4
C14	5
C15	6
C16	7
CR2	8
CR3	8
DS1	9
DS2	9
DS3	10
DS4	9
J1	11
Q1	12
R1	13
R2	14
R3	14
R4	THRU
R6	13
R7	15
R8	13
R9	13
R10	16
R11	17
R12	18
R13	19
R14	20
R15	14
R16	21
R17	13
R18	14
R19	22
R20	13
R21	23
R22	24
R23	13
R24	13
R25	25
R26	25
R27	THRU
R29	26
R30	THRU
R31	THRU
R32	13
TP1	27
TP2	28
TP3	29
TP4	30
U1	THRU
U12	31
U13	THRU
U23	32
U24	THRU
U35	33
U36	34
U37	THRU
U42	35
U43	36
U44	37
U45	38
U46	39
U47	36
U48	37
U49	36
U50	39
U51	40
U52	32
U53	38
U54	39
U55	41

MS 424181A

Figure 4. Circuit Card Assembly (13160370) (Group 0300)

SECTION II

(1) ITEM NO	(2) SMR CODE	(3) FSCM	(4) PART NUMBER	(5) DESCRIPTION AND USABLE ON CODES (UOC)	(6) QTY
				GROUP 0300 FIG. NO. 4	
				CIRCUIT CARD ASSEMBLY	
				13160370	
1	PADZZ	81349	M83421/01-103SR	CAPACITUR, FIXED, MET.....	1
2	PADZZ	81349	M39014/02-1360	CAPACITOR, FIXED, CER	1
3	PADZZ	81349	M39003/01-3024	CAPACITOR. FIXED, ELE.....	3
4	PADZZ	81349	M39014/02-1350	CAPACITOR FIXED, CER	8
5	PADZZ	81349	M39014/02-1338	CAPACITOR, FIXED, CER	1
6	PADZZ	81349	M39014/01-1357	CAPACITOR.FIXED, CER	1
7	PADZZ	81349	M39014/01-1350	CAPACITOR, FIXED, CER	1
8	PADZZ	81349	JANTXLN4150	SEMICONDUCTOR DEVIC	2
9	PADZZ	18876	11507860-1	LIGHT, INDICATOR.....	3
10	PADZZ	18876	11507860-2	LIGHT, INDICATOR.....	1
11	PADZZ	81349	M55302/61A26	CONNECTOR, RECEPTACL.....	1
12	PADZZ	81349	JANTX2N2219A	TRANSISTOR.....	1
13	PADZZ	81349	RCR07G102JS	RESISTOR, FIXED, COMP.....	14
14	PADZZ	81349	RNC55H1022FS	RESISTOR, FIXED, FILM	5
15	PADZZ	81349	RCR07G223JS	RESISTOR, FIXED, COMP.....	1
16	PADZZ	81349	RCR07G153JS	RESISTOR, FIXED.....	1
17	PADZZ	81349	RNC55H1543FS	RESISTOR, FIXED, FILM	1
18	PADZZ	81349	RNC55HI272FS	RESISTOR, FIXED, FILM	1
19	PADZZ	81349	RNC55H3481FS	RESISTOR, FIXED, FIL.....	1
20	XDDZZ	81349	RTR22DPS02M	RESISTOR, VAR WW.....	1
21	PADZZ	81349	RNCS5H2871FS	RESISTOR, FIXED, FILM	1
22	PADZZ	81349	RNC55H5620FS	RESISTOR, FIXED, FILM.....	1
23	PADZZ	81349	RNC55H1022BS	RESISTOR, FIXED, FILM.....	1
24	PADZZ	81349	RNC55H1001FS	RESISTOR, FIXED, FILM	1
25	PADZZ	81349	RCR07G33IJS	RESISTOR, FIXED, COMP.....	2
26	PADZZ	81349	RCR07G103JS	RESISTOR, FIXED, CGMP.....	3
27	PADZZ	18876	11507826-3	JACK, TIP.....	1
28	XDDZZ	18876	11507826-4	JACK, TIP.....	1
29	PADZZ	18876	11507826-1	JACK, TIP.....	1
30	XDDZZ	18876	11507826-2	JACK, TIP.....	1
31	PADZZ	19200	11745624	INTEGRATED CIRCUIT.....	12
32	PADZZ	81349	M8340101M1000GARE	SISTOR NETWORK, FI	12
33	PADZZ	81349	M38510/30704BEB	MICROCIRCUIT, DIGITA.....	12
34	PADZZ	81349	M38510/00105BCB	MICROCIRCUIT, DIGITA.....	1
35	PADZZ	81349	M38510/30605BCB	MICROCIRCUIT, DIGITA.....	6
36	PADZZ	81349	M38510-00104BCB	MICROCIRCUIT, DIGITA.....	3
37	PADZZ	81349	M38510/01205EB	MICROCIRCUIT, DIGITA.....	3
38	PADZZ	81349	M38510/00202BCB	MICROCIRCUIT, DIGITA.....	1
39	PADZZ	81349	M38510/00801BCB	MICROCIRCUIT, LINEAR.....	1
41	PADZZ	81349	M38510/316028EB	MICROCIRCUIT, DIGITA.....	1
42	PADZZ	96906	MS51957-5	SCREW, MACHINE	2
43	PADZZ	96906	MS35338-134	WASHER, LOCK	2
44	PADZZ	96906	MS15795-802	WASHER, FLAT	2
45	PADZZ	80205	NAS671C2	NUT, PLAIN, HEXAGON.....	2
46	PAFZZ	96906	M524515-685	LAMP, INCANDESCENT	4
47	XADZZ	55717	11507824	PRINTED WIRING BRD	1

END OF FIGURE

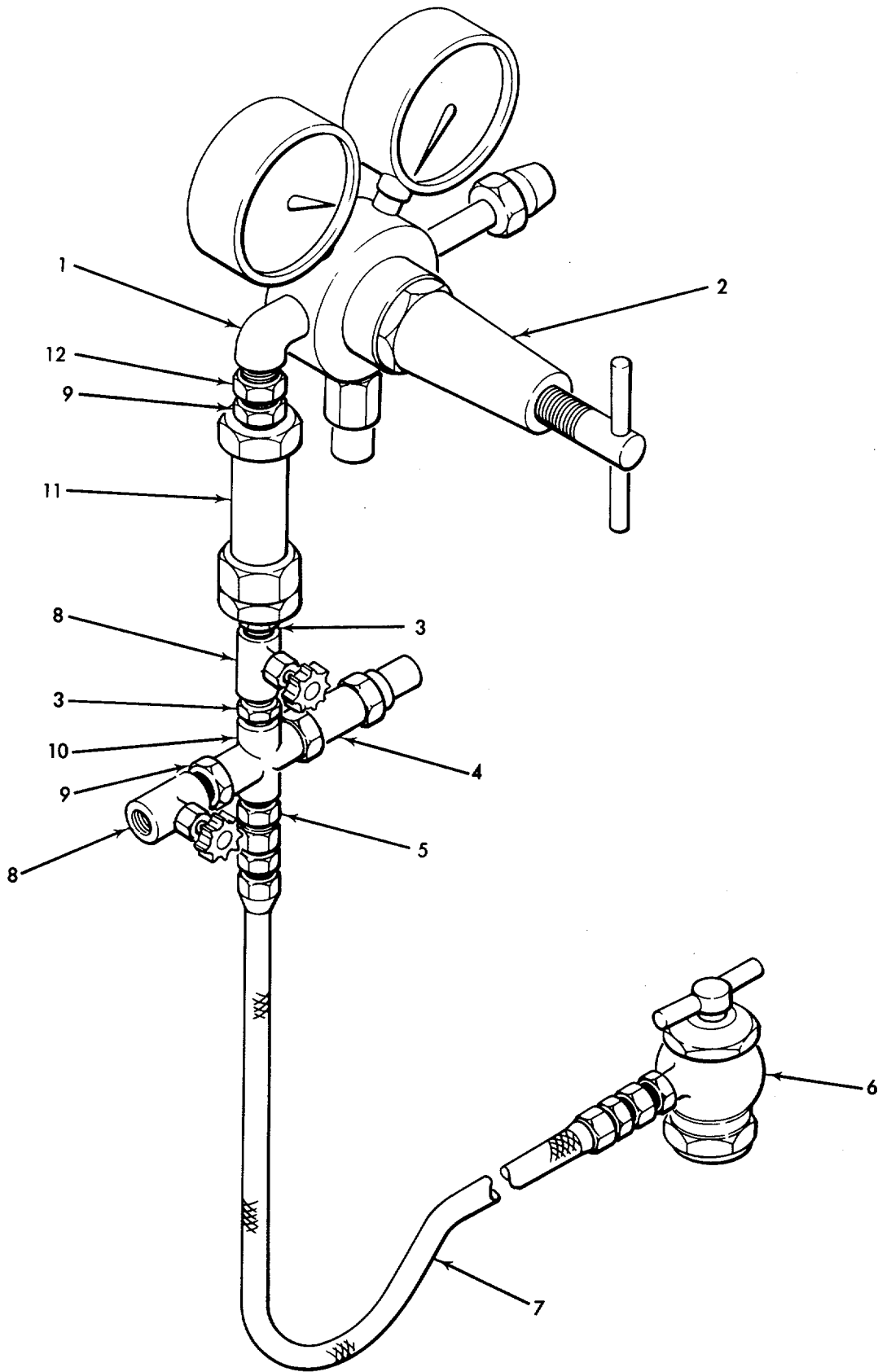


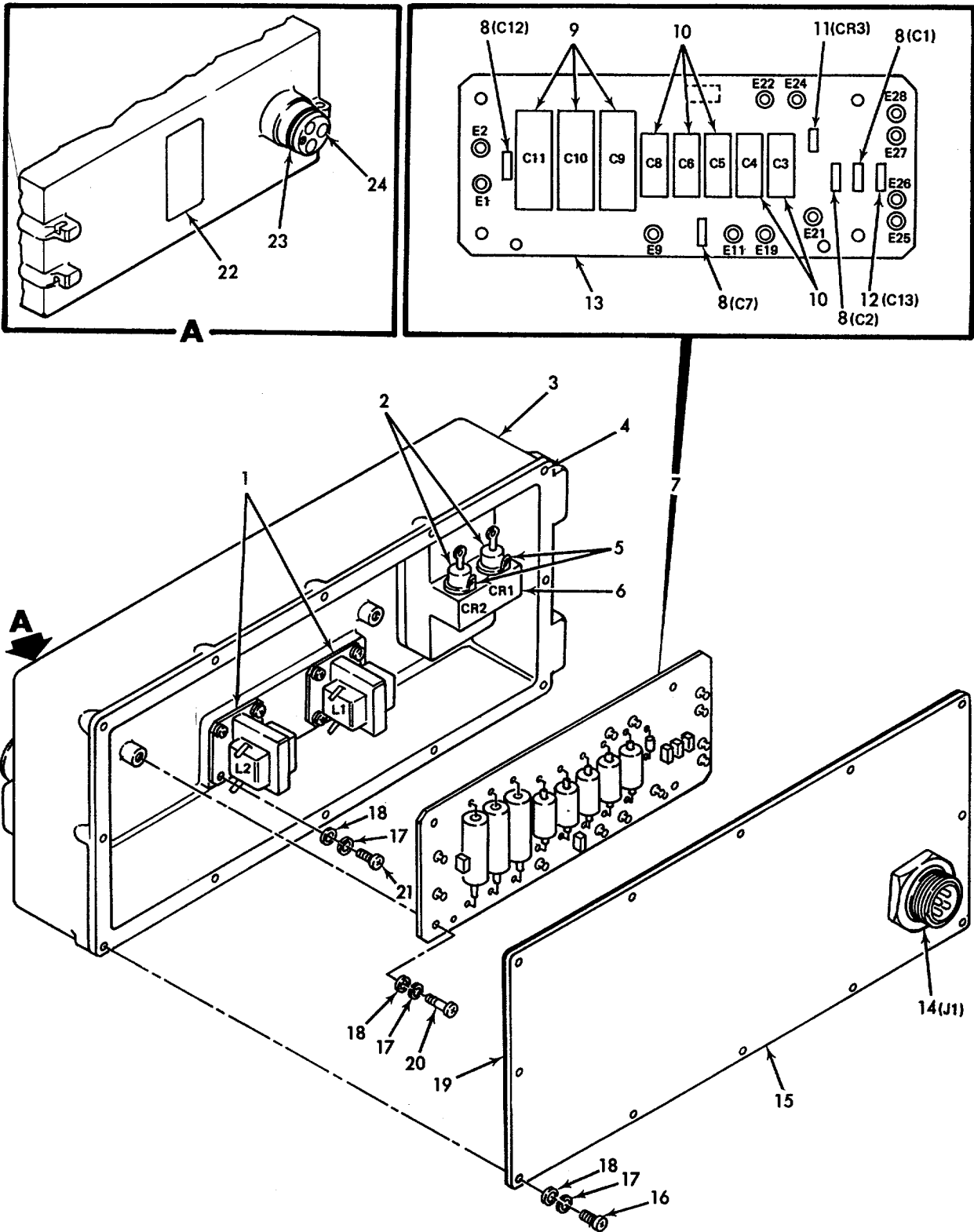
Figure 5. Gas Charging Assembly (11507817) (Group 0400)

SECTION II

TM 9-4931-477-24P

(1) ITEM NO	(2) SMR CODE	(3) FSCM	(4) PART NUMBER	(5) DESCRIPTION AND USABLE ON CODES (UOC)	(6) QTY
				GROUP 0400 GAS CHARGING ASSEMBLY 11507817 (18876)	5
1	PAFZZ	88044	AN914-2J	ELBOW, PIPE.....	1
2	PAFZZ	18876	P9198-001-01	VALVE, CYLINDER, GAS	1
3	PAFZZ	88044	AN911-1J	NIPPLE, PIPE	2
4	PAFZZ	18876	P8712-004	VALVE, PRESSURE RELI	1
5	PAFZZ	88044	AN816-3J	ADAPTER, STRAIGHT, PI.....	1
6	PAFZZ	18876	13034314	VALVE, ANGLE.....	1
7	PAFZZ	55717	11508468	HOSE ASSEMBLY, NONME.....	1
8	PAFZZ	18876	13034313	VALVE, GLOBE.....	2
9	PAFZZ	18876	11507831	NIPPLE, PIPE THREAD.....	2
10	PAFZZ	88044	AN918-1J	CROSS, PIPE.....	1
11	PAFZZ	18876	P27656-001	FILTER	1
12	PAFZZ	88044	AN912-IJ	BUSHING, PIPE	1

END OF FIGURE



MS 424183B

Figure 6. Electronic Component (13944298) (Group 0500)

SECTION II

(1) ITEM NO	(2) SMR CODE	(3) FSCM	(4) PART NUMBER	(5) DESCRIPTION AND USABLE ON CODES (UOC)	(6) QTY
				GROUP 0500 ELECTRONIC COMPONENT 13044298 (18876)	6
1	PAFZZ	18876	11507832	REACTOR	2
2	PAFZZ	81349	JANTX1N1202A	SEMICONDUCTOR DEVIC	2
3	XDDDD	18876	11559417	HOUSING.....	1
4	PAOZZ	96906	MS122116	INSERT, SCREW THREAD	24
5	PAFZZ	96906	MS35431-7	TERMINAL, LUG	2
6	PADZZ	18876	13044290	HEAT SINK, ELECTRICA.	1
7	PAODO	18876	13044289	CIRCUIT CARD ASSEMB.....	1
8	PADZZ	81349	M39014/02-1350	CAPACITOR.FIXED, CER.	4
9	PADZZ	81349	M39006/22-0620	CAPACITOR, FIXED, ELE	3
10	PAFZZ	81349	M39003/01-3097	CAPACITOR, FIXED, ELE	5
11	PAFZZ	81349	JANTX1N5614	SEMICONDUCTOR DEVIC	1
12	PADZZ	81349	M39014/02-1419	CAPACITOR, FIXED, CER.....	1
13	XADZZ	18876	11559541	PRINTED HIRING BOAR.....	1
14	PAFZZ	96906	MS3449H14C4PN	CONNECTOR, RECEPTACL.....	1
15	XDFFF	55717	11508479	COVER ASSEMBLY	1
16	PAFZZ	96906	MS51957-15B	SCREW, MACHINE.....	12
17	PAFZZ	96906	MS35338-135	WASHER, LOCK.....	24
18	PAFZZ	80205	NAS620C4L	WASHER, FLAT	24
19	PAFZZ	18876	11508476	GASKET	1
20	PAFZZ	96906	MS51957-17	SCREW, MACHINE	4
21	PAFZZ	96906	MS51957-15	SCREW, MACHINE	8
22	XOD2Z	18876	8034915	PLATE, IDENTIFICATIO.....	1
23	PADZZ	80205	NAS1611-021	PACKING, PREFORMED... ..	1
24	XADZZ	18876	13033893	TERMINAL, LUG.....	3

END OF FIGURE

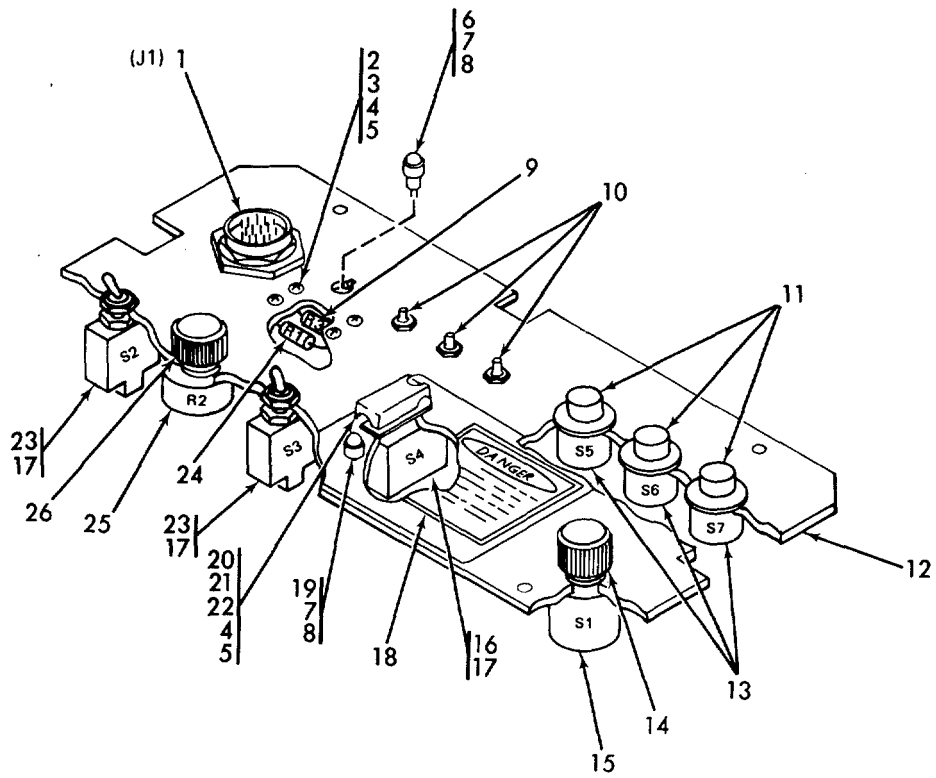


Figure 7. Panel Assembly (11559501) (Group 0600)

SECTION II

(1) ITEM NO	(2) SMR CODE	(3) FSCM	(4) PART NUMBER	(5) DESCRIPTION AND USABLE ON CODES (UOC)	(6) QTY
				GROUP 0600 PANEL ASSEMBLY 11559501 (188761)	7
1	PAFZA	96906	MS3474A16-26P	CONNECTOR, RECEPTACL.....	1
2	PAFZZ	81349	SE1969D01S	TERMINAL, STUD	4
3	PAFZZ	80205	NAS1635-04-4	SCREW, MACHINE	4
4	PAFZZ	80205	NAS620C4L	WASHER, FLAT	4
5	PAFZZ	96906	MS35338-135	WASHER, LOCK.....	4
6	XDFZZ	81349	LC27GT2	LENS, LIGHT	1
7	PAFZZ	96906	MS25237-387	LAMP, INCANDESCENT	2
8	PAFZZ	81349	LH73-2	LIGHT, INDICATOR.....	2
9	PAFZZ	81349	RCR20G682JS	RESISTOR, FIXED, COMP	1
10	PAFZZ	81349	FT010A01S	TERMINAL.....	3
11	PAFZZ	188746	13034205	DIAL, CONTROL.....	3
12	XOFZZ	18876	11559502	PANEL.....	1
13	PAFZZ	18876	13034212	SWITCH,ROTARY.....	3
14	PAFZZ	96906	MS91528-2C28	KNOB	1
15	XDFZZ	81349	M3786/4-3018	SWITCH, ROTARY	1
16	PAFZZ	96906	MS25307-262	SWITCH TOGGLE.....	1
17	PAFZZ	96906	MS25036-101	TERMINAL, LUG.....	10
18	XDDZZ	18876	13044113	PLATE LASER WARNING	1
19	PAFZZ	81349	LC27WT2	LENS, LIGHT	1
20	PAFZZ	18876	11507847	GUARD, SWITCH.....	1
21	PAFZZ	96906	M551957-15	SCREW, MACHINE	1
22	PAFZZ	80205	NAS671C4	NUT, PLAIN, HEXAGON.....	1
23	PAFZZ	96906	MS24523-23	SWITCH, TOGGLE.....	2
24	PAFZZ	81349	RCR42G511JS	RESISTOR, FIXED, COMP	1
25	PAFZZ	81349	RV4NAYS502A	RESISTOR, VARIABLE	1
26	PAFZZ	96906	MS91528-2N2B	KNOB	1

END OF FIGURE

7-1/(7-2 Blank)

SECTION II

TM 9-4931-477-24P

(1) ITEM NO	(2) SMR CODE	(3) FSCM	(4) PART NUMBER	(5) DESCRIPTION AND USABLE ON CODES (UOC)	(6) QTY
				GROUP 9998 BULK MATERIAL	
1	PADZZ	81349	M23053/5-206-C	INSULATION SLEEVING.....	V
2	PADZZ	81349	M16878/4BJEO	WIRE, ELECTRICAL.....	V
3	PADZZ	81349	M16878/4BJE2	WIRE, ELECTRICAL.....	V
4	PADZZ	81349	M16878/4BJE9	WIRE, ELECTRICAL.....	V

END OF FIGURE

Bulk-1(Bulk-2 Blank)

NATIONAL STOCK NUMBER AND PART NUMBER INDEX

NATIONAL STOCK NUMBER INDEX					
STOCK NUMBER	FIG.	ITEM	STOCK NUMBER	FIG.	ITEM
5905-00-005-2680	4	18	5961-00-156-0618	6	11
5905-00-005-2902	3	17	6210-00-169-6129	7	19
5905-00-008-6886	4	17	5305-00-197-8890	1	33
5910-00-010-8192	6	10	5310-00-208-3786	7	22
5910-00-010-8666	4	6	5330-00-225-9054	1	28
5910-00-010-8718	4	5	5305-00-242-7275	6	16
5910-00-010-8721	6	12	4730-00-278-3905	5	12
5961-00-022-4386	4	12	5920-00-284-9220	3	28
5310-00-054-0041	1	34	5962-00-318-2223	4	36
5305-00-054-5639	4	42	5962-00-341-0544	4	34
5305-00-054-5647	1	17	6145-00-347-1171	BULK	2
5305-00-054-5649	6	21	5962-00-361-8732	4	39
	7	21	5962-00-369-7621	4	38
5305-00-054-5651	3	50	5935-00-370-2315	4	27
	6	20	5905-00-402-6917	4	22
5305-0 0-054-5653	3	42	5905-00-422-4802	4	19
5305-0 0-054-5654	3	43	5905-00-431-5146	4	14
5305-00-054-6652	2	8	6210-00-438-2234	7	8
	3	56	5935-00-448-5654	3	53
5305-00-054-6654	3	29	5961-00-479-8155	4	8
5305-00-054-6655	3	51	5961-00-494-4913	6	2
5305-00-054-6657	3	41	5930-00-504-6223	3	35
5305-00-054-6660	3	33	4730-00-540-0456	5	5
5310-00-057-0573	3	12	6145-00-553-8517	BULK	3
5305-00-059-3661	2	10	4730-00-555-8145	5	1
5935-00-078-1707	3	30	5940-00-577-3807	3	45
5940-00-082-4897	3	36	5310-00-584-3782	1	18
5905-00-106-3666	4	26	4730-00-595-3875	5	3
5905-00-110-7620	3	16	5310-00-595-6761	4	44
	4	13	5310-00-595-6772	2	9
5905-00-112-1486	3	20		3	23
5910-00-113-5465	4	2	5355-00-619-4668	7	26
5910-00-113-5467	4	7	5905-00-643-5626	7	25
5910-00-113-5499	4	4	5930-00-655-4241	3	31
	6	8	5365-00-662-3097	3	21
5940-00-113-8184	3	59	5930-00-683-1629	7	23
5905-00-114-0710	4	25	5940-00-683-4339	6	5
5305-00-116-1811	7	3	5940-00-688-6005	3	47
5905-00-116-8555	4	16	5935-00-702-4199	3	37
5905-00-116-8556	4	15	4730-00-720-2037	5	10
5905-00-138-3376	4	24	5310-00-723-9676	6	18
5905-00-138-7391	4	23		7	4
5905-00-138-7395	3	18	5355-00-751-7597	3	38
5930-00-140-0033	3	24	6240-00-752-2581	4	46
5905-00-141-1165	7	9	5905-00-758-5011	4	21
5905-00-141-1183	3	19	5355-00-762-1489	1	16
5910-00-144-4381	4	3	6240-00-763-7744	7	7
5330-00-148-3950	1	25	5970-00-767-0524	BULK	1
5905-00-153-4896	7	24	5310-00-773-7624	2	7
5961-00-156-0618	3	57		3	25

NATIONAL STOCK NUMBER AND PART NUMBER INDEX

NATIONAL STOCK NUMBER INDEX					
STOCK NUMBER	FIG.	ITEM	STOCK NUMBER	FIG.	ITEM
5310-00-782-1349	3	4	4931-01-074-6087	2	2
5310-00-812-4294	4	45	4931-01-075-6310	1	4
5940-00-813-0698	3	46	4931-01-075-6380	1	2
	7	17	6210-01-078-0343	3	32
5340-00-834-8789	3	49	6210-01-078-9923	4	9
5935-00-835-0510	3	39	6210-01-078-9924	4	10
5340-00-842-5920	6	4	5950-01-079-9034	6	1
5310-00-845-2359	3	5	1260-01-082-1804	1	26
5310-00-878-9518	3	6	5962-01-085-0603	4	41
5310-00-880-5976	3	7	5910-01-086-8942	4	1
5920-00-892-9311	3	27	5935-01-089-8858	1	8
5940-00-900-3755	7	2	5935-01-092-3428	1	15
5930-00-901-4657	7	16	5962-01-092-5207	4	33
5340-00-915-2342	3	54	5930-01-099-2645	3	13
5310-00-928-2690	4	43	4820-01-100-2093	5	6
5310-00-933-8118	1	19	4931-01-100-2211	2	5
	3	11	5945-01-100-4479	3	55
	6	17	4820-01-100-7059	5	8
	7	5	5935-01-102-0926	3	52
5310-00-933-8120	3	22	4931-01-1017-6889	1	29
5340-00-943-6041	3	48	6145-01-108-6907	BULK	4
5355-00-969-6948	7	14	5910-01-119-4283	6	9
1240-01-005-2829	4	31	5995-01-122-5709	1	30
5930-01-019-8504	3	10	5930-01-126-4538	7	20
5935-01-033-0580	1	11	5940-01-135-7076	1	10
5935-01-034-1114	4	11	5940-01-136-2540	1	9
5962-01-042-5385	4	37	5935-01-144-2269	7	1
4931-01-046-2835	1	1	5940-01-154-6178	7	10
5330-01-053-1450	6	23	5935-01-206-9992	1	22
4931-01-056-0667	5	9	4931-01-218-1776	3	8
4931-01-056-6049	5	11	1260-01-221-9178	1	20
4931-01-056-6050	5	4	5999-01-221-9197	6	6
4931-01-056-7976	1	24	1260-01-221-9199	6	7
4931-01-057-2206	1	23			
6150-01-057-4523	2	3			
4720-01-057-9714	5	7			
5930-01-058-4154	7	13			
5355-01-059-3637	7	11			
5905-01-065-4068	4	32			
5962-01-068-9593	4	35			
4931-01-071-4024	5	2			
1420-01-072-1020	1	21			
5990-01-073-1640	1	5			
4931-01-073-1674	2	6			
5330-01-073-1687	6	19			
4931-01-073-5819	1	13			
4931-01-073-5899	3	40			
4931-01-073-5901	1	27			
4931-01-073-5902	3	1			
4931-01-073-5903	3	3			

NATIONAL STOCK NUMBER AND PART NUMBER INDEX

		PART NUMBER INDEX		
FSCM	PART NUMBER	STOCK NUMBER	FIG.	ITEM
88044	AN816-3J	4730-00-540-0456	5	5
88044	AN911-IJ	4730-00-595-3875	5	3
88044	AN912-IJ	4730-00-278-3905	5	12
88044	AN914-2J	4730-00-555-8145	5	1
88044	AN918-1J	4730-00-720-2037	5	10
88044	AN960C4L	5310-00-584-3782	1	18
81349	FHN26G1	5920-00-892-9311	3	27
81349	FT010A0LS	5940-01-154-6178	7	10
81349	FT 19A01	5940-00-082-4897	3	36
81349	F02825CV1A	5920-00-284-9220	3	28
81349	JANTXIN1202A	5961-00-494-4913	6	2
81349	JANTXIN4150	5961-00-479-8155	4	8
81349	JANTXN5614	5961-00-156-0618	3	57
			6	11
81349	JANTX2N2219A	5961-00-022-4386	4	12
81349	LC27GT2		7	6
8134 9	LC27WT2	6210-00-169-6129	7	19
81349	LHC83/IGT2	6210-01-078-0343	3	32
81349	LH 73-2	6210-00-438-2234	7	8
18876	MIS-23529	5990-01-073-1640	1	5
96906	MS 122116	5340-00-842-5920	6	4
9690 6	MS 15795-802	5310-00-595-6761	4	44
96906	MS 15795-804	5310-00-782-1349	3	4
96906	MS 15795-806	5310-00-880-5976	3	7
96906	MS 15795-808	5310-00-595-6772	2	9
			3	23
96906	MS24515-685	6240-00-752-2581	4	46
96906	MS24523-23	5930-00-683-1629	7	23
96906	MS24524-23	5930-00-655-4241	3	31
96906	MS25036-101	5940-00-813-0698	3	46
			7	17
96906	MS25036-143	5940-00-688-6005	3	47
96906	MS25036-145	5940-00-577-3807	3	45
96906	MS25036-150	5940-00-113-8184	3	59
96906	MS25089-4C	5930-00-504-6223	3	35
96906	MS25237-387	6240-00-763-7744	7	7
96906	MS25281F4	5340-00-943-6041	3	48
96906	MS25281F5	5340-00-834-8789	3	49
96906	MS25281F6	5340-00-915-2342	3	54
96906	MS25307-262	5930-00-901-4657	7	16
96906	MS27743-4	5945-01-100-4479	3	55
96906	MS3449H14C4PN		6	14
96906	MS3474A16-26P	5935-01-144-2269	7	1
96906	MS3475L12-10S	5935-01-092-3428	1	15
96906	MS3476L14-4S		1	3
96906	MS 35338-134	5310-00-928-2690	4	43
96906	MS35338-135	5310-00-933-8118	1	19
			3	11
			6	17
			7	5
96906	MS35338-138	5310-00-933-8120	3	22

NATIONAL STOCK NUMBER AND PART NUMBER INDEX

FSCM	PART NUMBER	PART NUMBER INDEX		FIG.	ITEM
			STOCK NUMBER		
96906	MS35431-7		5940-00-683-4339	6	5
96906	MS51957-13		5305-00-054-5647	1	17
96906	MS51957-15		5305-00-054-5649	6	21
				7	21
96906	MS51957-15B		5305-00-242-7275	6	16
96906	MS51957-17		5305-00-054-5651	3	50
				6	20
96906	MS51957-19		5305-00-054-5653	3	42
96906	MS51957-20		5305-00-054-5654	3	43
96906	MS51957-28		5305-00-054-6652	2	8
				3	56
96906	MS51957-30		5305-00-054-6654	3	29
96906	MS51957-31		5305-00-054-6655	3	51
96906	MS51957-33		5305-00-054-6657	3	41
96906	MS51957-36		5305-00-054-6660	3	33
96906	MS51957-5		5305-00-054-5639	4	42
96906	MS51958-65		5305-00-059-3661	2	10
96906	MS9068-010		5330-00-225-9054	1	28
96906	MS91528-0E1B		5355-00-762-1489	1	16
96906	MS91528-1828		5355-00-751-7597	3	38
96906	MS91528-2C2B		5355-00-969-6948	7	14
96906	MS91528-2N28		5355-00-619-4668	7	26
81349	M16878/4BJE0		6145-00-347-1171	BULK	2
81349	M16878/48JE2		6145-00-553-8517	BULK	3
81349	M16878/4BJE9		6145-01-108-6907	BULK	4
81349	M23053/5-206-C		5970-00-767-0524	BULK	1
81349	M3786-4-3050		5930-01-099-2645	3	13
81349	M3786/4-3018			7	15
81349	M38510-00104BCB		5962-00-318-2223	4	36
81349	M38510/00105BCB		5962-00-341-0544	4	34
81349	M38510/00202BCB		5962-00-369-7621	4	38
81349	M38510/00801BCB		5962-00-361-8732	4	39
81349	M38510J0L205BEB		5962-01-042-5385	4	37
81349	M38510/30605BCB		5962-01-068-9593	4	35
81349	M38510/30704BEB		5962-01-092-5207	4	33
81349	M38510/31602BEB		5962-01-085-0603	4	41
81349	M39003/01-3024		5910-00-144-4381	4	3
81349	M39003/01-3097		5910-00-010-8192	6	10
81349	M39006/22-0620		5910-01-119-4283	6	9
81349	M39012/21-0001		5935-00-835-0510	3	39
81349	M39014/01-1350		5910-00-113-5467	4	7
81349	M39014/01-1357		5910-00-010-8666	4	6
81349	M39014/02-1338		5910-00-010-8718	4	5
81349	M39014/02-1350		5910-00-113-5499	4	4
				6	8
81349	M39014/02-1360		5910-00-113-5465	4	2
8134 9	M39014/02-1419		5910-00-010-8721	6	12
81349	M39024/10-02		5935-00-702-4199	3	37
81349	M55302/61A26		5935-01-034-1114	4	11
81349	M55302/62A26M		5935-01-102-0926	3	52
81349	M8340101M1000GA		5905-01-065-4068	4	32

NATIONAL STOCK NUMBER AND PART NUMBER INDEX

		PART NUMBER INDEX		
FSCM	PART NUMBER	STOCK NUMBER	FIG.	ITEM
81349	M83421/01-1039R	5910-01-086-8942	4	1
81349	M83519/1-1	5940-01-135-7076	1	10
81349	M83519/1-2	5940-01-136-2540	1	9
81349	M83723/06R1832N	5935-00-448-5654	3	53
81349	M83723/16M12M	5935-01-033-0580	1	11
81349	M83723/16S08B	5935-01-089-8858	1	8
81349	M8805-26-001	5930-01-019-8504	3	10
81349	M8805/26-009	5930-00-140-0033	3	24
80205	NAS1291C04M	5310-00-845-2359	3	5
80205	NAS1291C06M	5310-00-878-9518	3	6
80205	NAS1611-021	5330-01-053-1450	6	23
80205	NAS1635-04-4	5305-00-116-1811	7	3
80205	NAS1635-06-7	5305-00-197-8890	1	33
80205	NAS43DD-1-27		3	9
80205	NAS43D01-64	5365-00-662-3097	3	21
80205	NAS620C4	5310-00-057-0573	3	12
80205	NAS620C4L	5310-00-723-9676	6	18
			7	4
8020 5	NAS620C6	5310-00-773-7624	2	7
			3	25
80205	NAS620C6L	5310-00-054-0041	1	34
80205	NAS671C2	5310-00-812-4294	4	45
80205	NAS671C4	5310-00-208-3786	7	22
18876	P27656-001	4931-01-056-6049	5	11
18876	P8712-C04	4931-01-056-6050	5	4
18876	P9198-0011-01	4931-01-071-4024	5	2
81349	RCR07G00JS	5905-00-141-1183	3	19
81349	RCR07G102JS	5905-00-110-7620	3	16
			4	13
81349	RCR07G103JS	5905-00-106-3666	4	26
81349	RCR07GI53JS	5905-00-116-8555	4	16
81349	RCR07G223JS	5905-00-116-8556	4	15
81349	RCR07G331JS	5905-00-114-0710	4	25
81349	RCR20G682JS	5905-00-141-1165	7	9
81349	RCR42G51JS	5905-00-153-4896	7	24
81349	RNC55H100FS	5905-00-138-3376	4	24
81349	RNC55H1022BS	5905-00-138-7391	4	23
81349	RNC55H1022FS	5905-00-431-5146	4	14
81349	RNC55H1272FS	5905-00-005-2680	4	18
81349	RNC55H1543FS	5905-00-008-6886	4	17
81349	RNC55H1872FS	5905-00-138-7395	3	18
81349	RNC55H2871FS	5905-00-758-5011	4	21
81349	RNC55H3012FS	5905-00-005-2902	3	17
81349	RNC55H3481FS	5905-00-422-4802	4	19
81349	RNC55H5620FS	5905-00-402-6917	4	22
81349	RNC55H6191FS	5905-00-112-1486	3	20
81349	RTR22DP502M		4	20
81349	RV4NAYS502A	5905-00-643-5626	7	25
81349	SE196001S	5940-00-900-3755	7	2
18876	11507646-31	5330-00-148-3950	1	25
18876	11507815	4931-01-046-2835	1	1

NATIONAL STOCK NUMBER AND PART NUMBER INDEX

FSCM	PART NUMBER	PART NUMBER INDEX		FIG.	ITEM
			STOCK NUMBER		
18876	11507817		4931-01-107-6889	1	29
55717	11507820			2	4
55717	11507822			3	26
55717	11507824			4	47
18876	11507826-1			4	29
18876	11507826-2			4	30
18876	11507826-3		5935-00-370-2315	4	27
18876	11507826-4			4	28
18876	11507829		4931-01-073-5899	3	40
18876	11507831		4931-01-056-0667	5	9
18876	11507832		5950-01-079-9034	6	1
18876	11507833		4931-01-073-5901	1	27
18876	11507834		4931-01-073-5902	3	1
18876	11507835		4931-01-056-7976	1	24
55717	11507837			3	2
18876	11507839		6150-01-057-4523	2	3
18876	11507842		4931-01-100-2211	2	5
18876	11507843		4931-01-073-5903	3	3
55717	11507845			3	44
55717	11507846			3	15
55717	11507847			3	34
			5930-01-126-4538	7	20
18876	11507849		4931-01-057-2206	1	23
55717	11507852		5935-00-078-1707	3	30
18876	11507860-1		6210-01-078-9923	4	9
18876	11507860-2		6210-01-078-9924	4	10
18876	11507925		4931-01-073-5819	1	13
55717	11508018			1	6
55717	11508043			1	7
18876	11508261		4931-01-074-6087	2	2
55717	11508468		4720-01-057-9714	5	7
18876	11 508476		5330-01-073-1687	6	19
55717	11508479			6	15
18876	11508483		4931-01-075-6310	1	4
18876	11559417			6	3
18876	11559500			1	31
18876	11559501			1	35
18876	11559502			7	12
18876	11559504			1	32
18876	11 559506		5995-01-122-5709	1	30
18876	11559541			6	13
18876	11559554			4	40
18876	11559684			3	58
55717	11559721			1	14
18816	11559722		4931-01-073-1674	2	6
55717	11559723			1	12
19200	11745624		1240-01-005-2829	4	31
18876	13033893			6	24
18876	13033896		1260-01-082-1804	1	26
18876	13033955		4931-01-075-6380	1	2
18876	13 034205		5355-01-059-3637	7	11

NATIONAL STOCK NUMBER AND PART NUMBER INDEX

FSCM	PART NUMBER	PART NUMBER INDEX		FIG.	ITEM
			STOCK NUMBER		
18876	13034212		5930-01-058-4154	7	13
18876	13034313		4820-01-100-7059	5	8
18876	13034314		4820-01-100-2093	5	6
18876	13034390		1420-01-072-1020	1	21
55717	13044113			3	14
				7	18
18876	13044289		1260-01-221-9199	6	7
18876	13044290		5999-01-221-9197	6	6
18876	13044298		1260-01-221-9178	1	20
18876	13160219		5935-01-206-9992	1	22
18876	13160310		4931-01-218-1776	3	8
98278	6128			3	60
18876	8034915			1	36
				2	1
				6	22

I-7/(I-8 blank)

By Order of the Secretary of the Army:

JOHN A. WICKHAM, JR.
General, United States Army
Chief of Staff

Official:

R. L. DILWORTH
Brigadier General, United States Army
The Adjutant General

Distribution:

To be distributed in accordance with DA Form 12-32, Organizational, Direct and General Support Maintenance requirements for Ground Vehicular Laser Locator Designator(G/VLLD).

*U S GOVERNMENT PRINTING OFFICE 1991-531-038/40296

RECOMMENDED CHANGES TO EQUIPMENT TECHNICAL PUBLICATIONS



THEN...JOT DOWN THE DOPE ABOUT IT ON THIS FORM. CAREFULLY TEAR IT OUT, FOLD IT AND DROP IT IN THE MAIL.

SOMETHING WRONG WITH PUBLICATION

FROM: (PRINT YOUR UNIT'S COMPLETE ADDRESS)

DATE SENT

PUBLICATION NUMBER

PUBLICATION DATE

PUBLICATION TITLE

BE EXACT PIN-POINT WHERE IT IS

PAGE NO.	PARA-GRAPH	FIGURE NO.	TABLE NO.
----------	------------	------------	-----------

IN THIS SPACE, TELL WHAT IS WRONG AND WHAT SHOULD BE DONE ABOUT IT.

TEAR ALONG PERFORATED LINE

PRINTED NAME, GRADE OR TITLE AND TELEPHONE NUMBER

SIGN HERE

